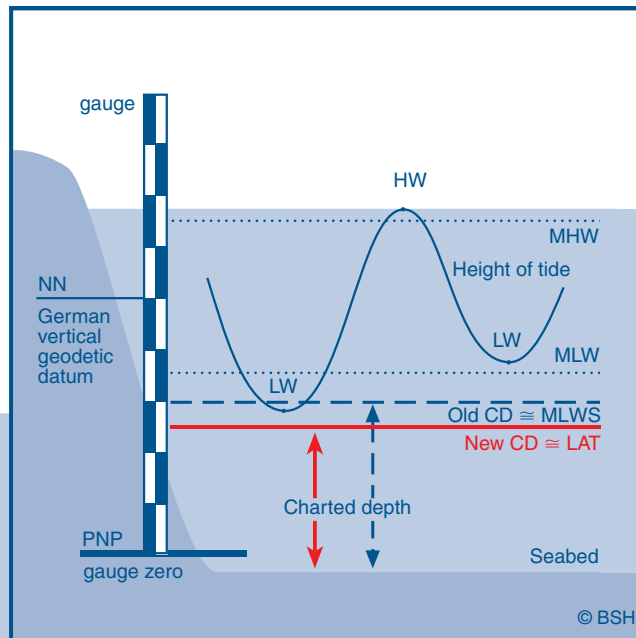


LAT – Simple and user-friendly

The Lowest Astronomical Tide (LAT) provides the following navigational advantages:

1. Common chart datum in the entire North Sea
2. Common reference level for international charts
3. No negative values in tide tables
4. The Charted depths are safer because water levels below LAT can only occur after prolonged periods of offshore wind

Comparison of Mean Low Water Springs and LAT



Note: Official notifications on maximum allowed draughts and the BSH's water level forecasts will continue to be referenced to mean high water or mean low water.

Contacts



Federal Waterways and Shipping Directorate North

Volker Neemann
Tel.: 0431 3394-7220
Hindenburgufer 247 · 24106 Kiel
wsd-nord@wsv.bund.de
www.wsd-nord.de

Federal Waterways and Shipping Directorate North West

Klaus Wulff
Tel.: 04941 602-480
Schloßplatz 9 · 26603 Aurich
wsd-nordwest@wsv.bund.de
www.wsd-nordwest.de

Federal Maritime and Hydrographic Agency

Sea Level Forecast Service
Tel.: 040 3190-3190
Bernhard-Nocht-Str. 78 · 20359 Hamburg

Max Funcke
Tel.: 0381 4563-619
Neptunallee 5 · 18057 Rostock

posteingang@bsh.de
www.bsh.de

Issue date: July 2009



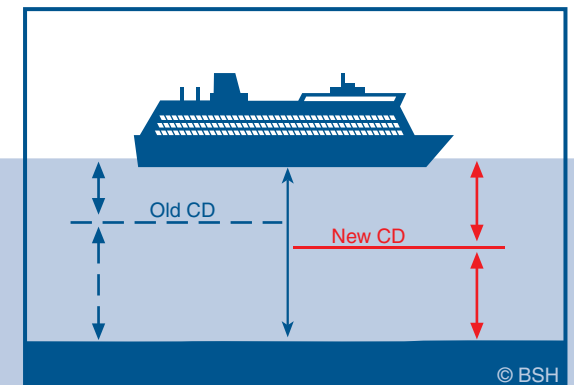
Diese Druckschrift wird im Rahmen der Öffentlichkeitsarbeit des Bundesministeriums für Verkehr, Bau und Stadtentwicklung kostenlos herausgegeben. Sie darf weder von Parteien noch von Wahlhelfern während des Wahlkampfes zum Zwecke der Wahlwerbung verwendet werden. Dieses gilt für Europa-, Bundestags-, Landtags- und Kommunalwahlen. Missbräuchlich sind besonders die Verteilung auf Wahlkampfveranstaltungen, an Informationsständen der Parteien sowie das Einlegen, Aufdrucken oder Aufkleben parteipolitischer Information oder Werbemittel. Untersagt ist gleichfalls die Weitergabe an Dritte zum Zwecke der Wahlwerbung. Unabhängig davon, wann, auf welchem Wege und in welcher Anzahl diese Schrift dem Empfänger zugegangen ist, darf sie auch ohne zeitlichen Bezug zu einer bevorstehenden Wahl nicht in einer Weise verwendet werden, die als Parteiannahme der Bundesregierung zugunsten einzelner politischer Gruppen verstanden werden könnte.



Federal Ministry
of Transport, Building
and Urban Affairs

Since 2005

New Chart Datum



The available depth is unchanged!

Chart datum (CD)

Nautical charts are indispensable for safe navigation. The depth data in our charts are minimum depths below which water levels can only fall after prolonged periods of offshore winds in the German Bight. All depths are referred to chart datum (CD), which is a uniform reference level. In accordance with International Hydrographic Organization regulations, all European riparian states are using a common chart datum.

The Mean Low Water Springs (MLWS) was the chart datum used in the German North Sea coastal waters until the end of 2004. In 2005, the Lowest Astronomical Tide (LAT) was adopted as the new chart datum. LAT is about 50 cm below the level of MLWS.

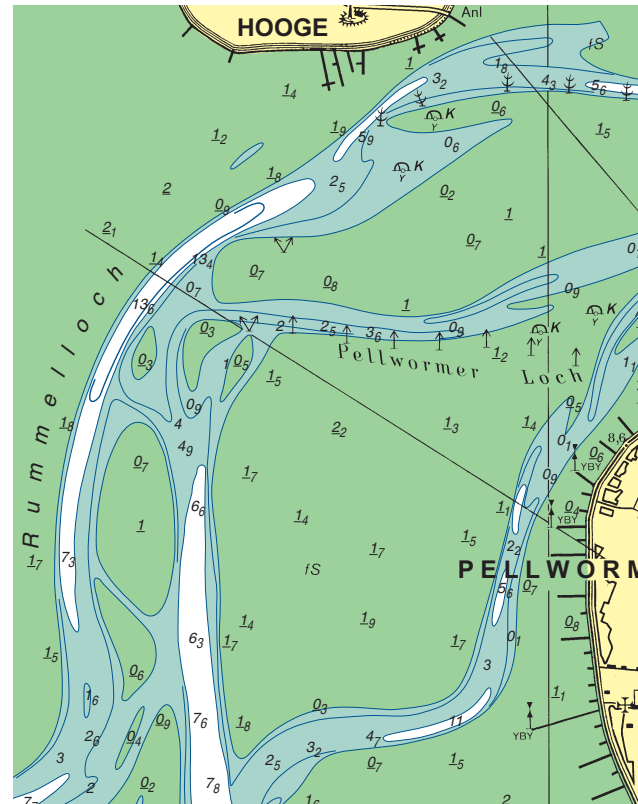
The chart datum in the Baltic Sea charts has not been changed because tides in the Baltic Sea are of negligible relevance to navigation.

What changes do you need to consider?

- As the new chart datum is below the level of the former datum, North Sea charts now show shallower water depths. Charted heights are higher than before, which means that the tidal flats area shown in the charts has increased in size.
- The tide tables now show higher predicted heights (since 2005).

Example of a chart referred to the old chart datum

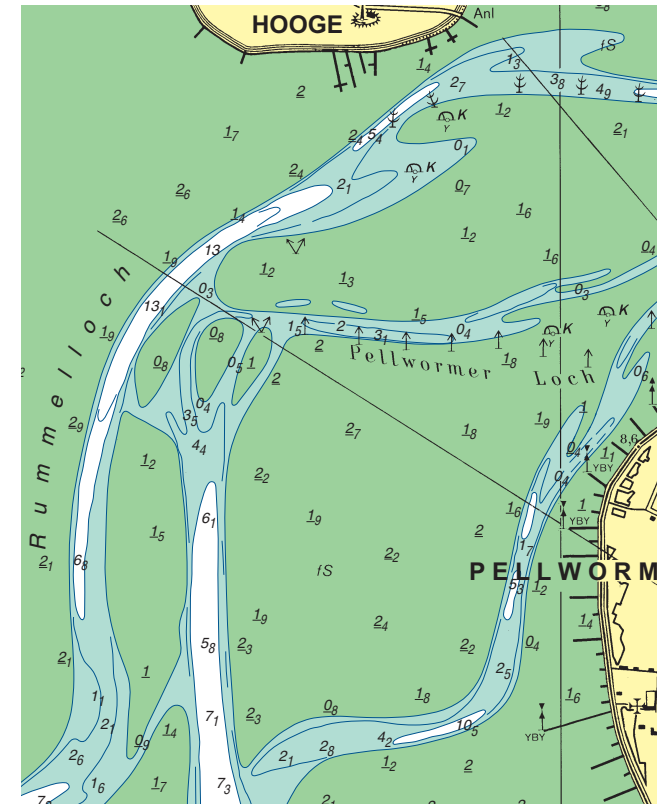
Old chart datum \cong MLWS (until 2004)



Depths (in metres) shown at their geographical position. Underlined figures are heights (in metres) above chart datum.

Example of a chart referred to the new chart datum

New chart datum \cong LAT (since 2005)



How has the change from MLWS to LAT been made?

- Available depths do not change, of course, but only appear to be shallower on the chart. You can use the same routes as before.
- In all new editions of charts, we have changed the charted depths to LAT datum. Most of the charts have been changed by now.
- Since 2005, the German Tide Tables have been changed completely to lowest astronomical tide (LAT) datum.
- Also the tidal signal stations have been changed to LAT since 2005.